

TraffiCloud Premium and Standard Reports Training

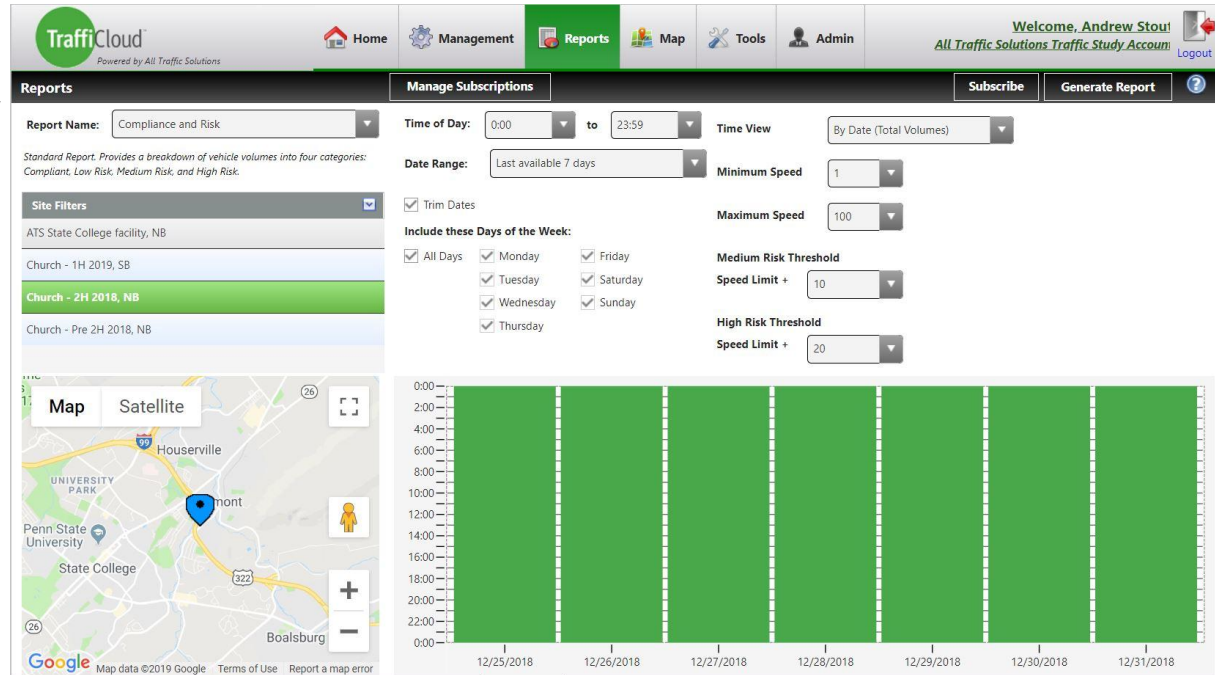
ALL TRAFFIC
SOLUTIONS



Reports

- Compliance & Risk*
- Speed Effectiveness*
- Extended* Speed Summary
- Enforcement Priorities*
- Volume By Speed Analysis
- Volume By Time Analysis
- “Raw Traffic Data”*

*Included with Premium Reporting suite



Why?

- Traffic Calming
- Data Comparison
 - Shield or SpeedAlert deployed set to Display off for a period of time to set baseline for data
 - Equipment then set to Speed Display or Dependent Messages
 - Allows User to compare data after equipment displaying speeds
- Reports to share with community
- Validate/refute traffic complaints from residents
- Create safer communities and ultimately save lives via increased awareness

Compliance and Risk

- Breaks down the number of vehicles into risk categories based on their speed in reference to the speed limit
- Risk categories selected by the user
- Can be viewed as totals or averages (totals recommended)

Time View

By Date (Total Volumes) ▼

By Hour (Avg Volumes)

By Day of Week (Avg Volumes)

By Date (Total Volumes)

By Week (Total Volumes)

ALL TRAFFIC
SOLUTIONS



Compliance And Risk Report

Generated by Andrew Stout from All Traffic Solutions Software Developer Account on Jul 16, 2019 at 3:5:35 PM

Time of Day: 0:00 to 23:59

Dates: 3/1/2019 to 3/7/2019

Medium Risk Threshold: Speed Limit + 5

High Risk Threshold: Speed Limit + 10

Time View: By Date (Total Volumes)

Speed Bins: Size 5, Range 1 to 100

Site: 1085 S Krocks Rd SB, SB

Date/Time Range	Speed Limit	Mode	Compliant	Low Risk	Medium Risk	High Risk	Total Num Vehicles
3/1/2019	25	Display Off	927	924	1047	624	3522
3/2/2019	25	Display Off	1038	706	933	499	3176
3/3/2019	25	Display Off	825	581	683	453	2542
3/4/2019	25	Display Off, Speed Display	850	671	681	395	2597
3/5/2019	25	Speed Display	1073	936	920	473	3402
3/6/2019	25	Speed Display	1108	954	863	505	3430
3/7/2019	25	Speed Display	1093	1038	922	531	3584
Total # Vehicles			6914	5810	6049	3480	22253



Compliance and Risk



- Graphical charts are provided
- Charts show percent and total vehicles in each risk category
- Line graph displays
 - Speed limit
 - Mean speed
 - 50% speed
 - 85% speed

Speed Effectiveness

- Can show effectiveness of signs
- Shows change between initial & final speed of vehicle
- Risk thresholds & time view same as Comp/Risk

ALL TRAFFIC SOLUTIONS



Generated by Andrew Stout from All Traffic Solutions Software Developer Account on Jul 16, 2019 at 3:42:24 PM

Medium Risk Threshold: Speed Limit + 5

High Risk Threshold: Speed Limit + 10

Time of Day: 0:00 to 23:59

Dates: 3/1/2019 to 3/7/2019

Speed Effectiveness Report

Time View: By Date (Total Volumes)

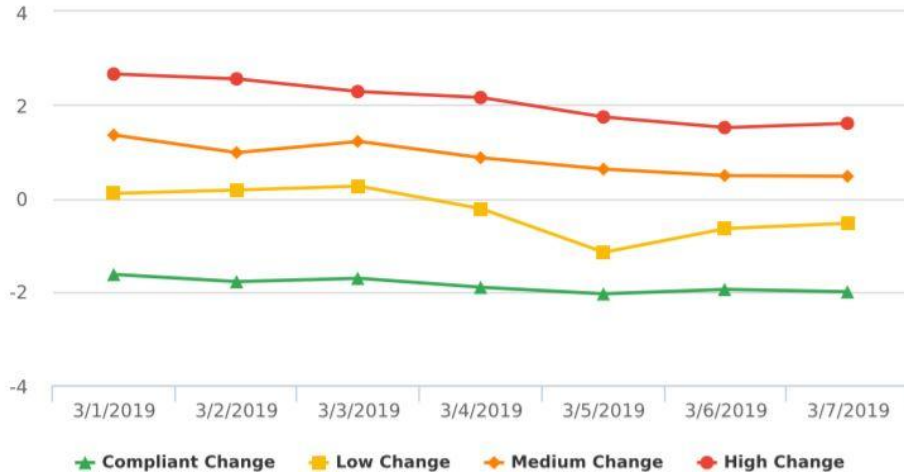
Speed Bins: Size 5, Range 1 to 100

Site: 1085 S Krocks Rd SB, SB

Date/Time Range	Spd Lim	Sign Mode	Compliant Avg Final Speed	Compliant Change in Speed	Low Risk Avg Final Speed	Low Risk Change in Speed	Medium Risk Avg Final Speed	Medium Risk Change in Speed	High Risk Avg Final Speed	High Risk Change in Speed	% of Vehicles Slowed By
3/1/2019	25	Display Off	17.5	-1.6	28.1	0.1	33.0	1.4	38.5	2.7	43.4 %
3/2/2019	25	Display Off	16.1	-1.8	28.1	0.2	32.9	1.0	38.6	2.6	47.8 %
3/3/2019	25	Display Off	16.8	-1.7	28.1	0.3	32.9	1.2	38.7	2.3	43.8 %
3/4/2019	25	Display Off, Speed Display	17.7	-1.9	28.0	-0.2	33.0	0.9	38.6	2.2	42.7 %
3/5/2019	25	Speed Display	18.2	-2.0	28.1	-1.2	32.9	0.6	38.5	1.7	51.5 %
3/6/2019	25	Speed Display	18.5	-2.0	28.0	-0.6	32.9	0.5	38.8	1.5	48.5 %
3/7/2019	25	Speed Display	18.2	-2.0	28.0	-0.5	32.9	0.5	38.8	1.6	47.9 %

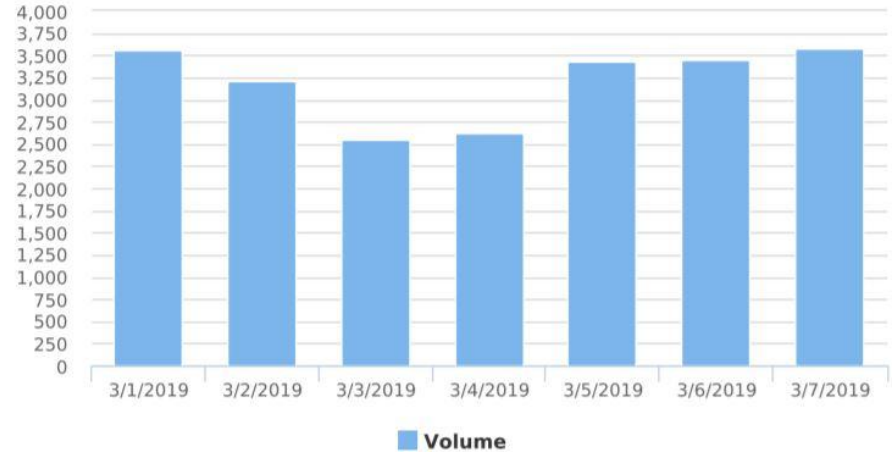
Speed Effectiveness

Changes in Speed by Risk Threshold



- Change in speed by date for each risk category

Volume by Date



- Displays total number of vehicles by date

Speed Summary/Extended Speed Summary

- Concise summary w/overview of the data from the traffic study
- Overall Summary includes all data from the Speed Summary Report
- Average speed and 85th percentile are representative of drivers' behavior
- 85th Percentile represents the speed that 85% of cars stayed at or below. (Helps indicate the “natural speed limit” of the road)

Time of Day: 0:00 to 23:59

Dates: 3/1/2019 to 3/7/2019

Overall Summary

Total Days of Data: 7

Speed Limit: 25

Average Speed: 25.74

50th Percentile Speed: 26.48

85th Percentile Speed: 33.0

Pace Speed Range: 23-33

Minimum Speed: 5

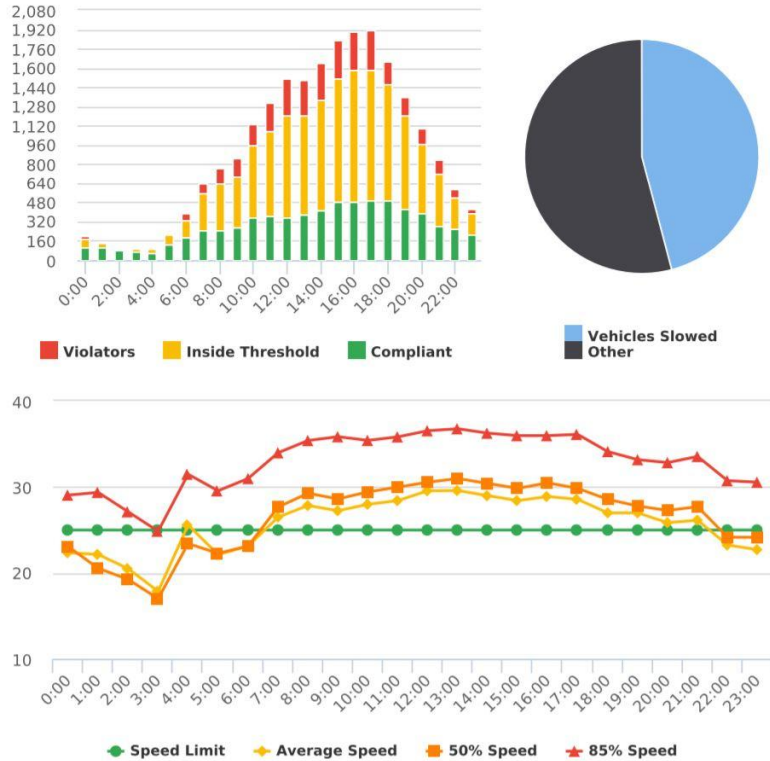
Maximum Speed: 61

Display Status: Display Off,Speed Display

Average Volume per Day: 3179.0

Total Volume: 22253

Extended Speed Summary



- Charts & Graphs included in the Extended Speed Summary as part of Premium Reports Suite
- Bar graph: Hourly volumes w/breakdown of speeds
- Pie chart: aka “sign effectiveness”
- Line graph: speed trends by hour

Extended Speed Summary

Hours	Sign Mode	Speed Limit	Total # Vehicles	Total # Violator	% Violator	Avg # Vehicles	Avg # Violator	Min Speed	Max Speed	Avg Speed	50% Speed	85% Speed	Sign Effectiveness
0:00	Display Off, Speed Display	25	198	23	11.6 %	28.3	3.3	5	44	22.4	23.1	29.1	54.4 %
1:00	Display Off, Speed Display	25	154	7	4.5 %	22.0	1.0	5	43	22.2	20.5	29.4	54.2 %
2:00	Display Off, Speed Display	25	99	7	7.1 %	14.1	1.0	5	50	20.5	19.3	27.1	50.4 %
3:00	Display Off, Speed Display	25	91	2	2.2 %	13.0	0.3	5	37	17.9	17.0	24.9	51.6 %
4:00	Display Off, Speed Display	25	107	8	7.5 %	15.3	1.1	5	45	25.6	23.4	31.5	33.9 %
5:00	Display Off, Speed Display	25	226	14	6.2 %	32.3	2.0	5	47	22.1	22.3	29.6	48.0 %
6:00	Display Off, Speed Display	25	392	56	14.3 %	56.0	8.0	5	61	23.1	23.1	31.0	44.1 %
7:00	Display Off, Speed Display	25	637	87	13.7 %	91.0	12.4	5	50	26.5	27.7	34.0	41.4 %
8:00	Display Off, Speed Display	25	773	129	16.7 %	110.4	18.4	5	52	27.9	29.3	35.4	38.3 %
9:00	Display Off, Speed Display	25	853	154	18.1 %	121.9	22.0	5	50	27.3	28.6	35.9	43.9 %
10:00	Display Off, Speed Display	25	1134	180	15.9 %	162.0	25.7	5	47	28.0	29.4	35.4	43.1 %
11:00	Display Off, Speed Display	25	1317	246	18.7 %	188.1	35.1	5	50	28.4	30.0	35.9	39.7 %
12:00	Display Off, Speed Display	25	1509	298	19.7 %	215.6	42.6	5	50	29.6	30.6	36.6	42.4 %

- Included in the Extended Speed Summary as part of Premium Reports Suite
- Hourly summary w/totals & averages for each hour
- Sign Effectiveness shows percentage of cars that slowed down in range of the sign
- Avg # Vehicles column facilitates utility of Enforcement Priorities by showing off-peak hours

Enforcement Priorities

ALL TRAFFIC
SOLUTIONS



Enforcement Priorities Report

Generated by Andrew Stout from All Traffic Solutions Software Developer Account on Jul 17, 2019 at 9:4:32 AM

Violation Threshold: Speed Limit + 10
Time of Day: 0:00 to 23:59
Dates: 3/1/2019 to 3/7/2019

Rank Results By: 85% Speed
Speed Bins: Size 5, Range 1 to 100
Site: 1085 S Krocks Rd SB, SB

#	Site	Day of Week	Time	Speed Limit	Average Speed	Average Violator Speed	85% Speed	Average # Vehicles	Average # Violators
1	1085 S Krocks Rd SB, SB	Tuesday	7:00 - 8:00	25	28.5	38.4	38.5	121.0	23.0
2	1085 S Krocks Rd SB, SB	Sunday	10:00 - 11:00	25	30.0	38.9	38.0	192.0	49.0
3	1085 S Krocks Rd SB, SB	Thursday	8:00 - 9:00	25	30.0	39.6	38.0	153.0	39.0
4	1085 S Krocks Rd SB, SB	Friday	12:00 - 13:00	25	31.0	38.6	38.0	227.0	56.0
5	1085 S Krocks Rd SB, SB	Saturday	13:00 - 14:00	25	30.5	39.4	37.5	231.0	48.0
6	1085 S Krocks Rd SB, SB	Sunday	9:00 - 10:00	25	29.0	38.8	37.0	121.0	28.0
7	1085 S Krocks Rd SB, SB	Sunday	12:00 - 13:00	25	30.0	38.8	37.0	250.0	53.0
8	1085 S Krocks Rd SB, SB	Sunday	13:00 - 14:00	25	30.0	39.1	37.0	263.0	49.0
9	1085 S Krocks Rd SB, SB	Sunday	15:00 - 16:00	25	30.0	38.3	37.0	243.0	52.0
10	1085 S Krocks Rd SB, SB	Monday	12:00 - 13:00	25	31.0	38.9	37.0	140.0	38.0
11	1085 S Krocks Rd SB, SB	Monday	14:00 - 15:00	25	28.0	39.0	37.0	194.0	36.0
12	1085 S Krocks Rd SB, SB	Tuesday	6:00 - 7:00	25	27.0	40.2	37.0	88.0	15.0
13	1085 S Krocks Rd SB, SB	Tuesday	13:00 - 14:00	25	29.0	39.4	37.0	226.0	43.0
14	1085 S Krocks Rd SB, SB	Wednesday	8:00 - 9:00	25	29.0	39.3	37.0	130.0	27.0
15	1085 S Krocks Rd SB, SB	Wednesday	17:00 - 18:00	25	29.0	39.6	37.0	306.0	62.0

- Analyzes and compares traffic data to list specific times at locations with the worst violation numbers (can select multiple sites)
- Allows user to filter off-peak hours found via Extended Speed Summary
- Results ranked via 85% speed or combination of speed/volume
- Facilitates focused enforcement to save man-hours



Raw Data

	A	B	C	D	E	F	G	H	I	J
1	id	location	source	sourceType	timestamp	UploadDateTime	UploadGUID	DeviceThingName	SpeedLimit	SignMode
2	331357356	0.0,0.0,0.0	ATS.Site32270	Thing	2018-04-24 0:00:	2018-04-25 7:56:	069e9887-4c87-	ATS.Device.1295	25	Speed Display
3	331357357	0.0,0.0,0.0	ATS.Site32270	Thing	2018-04-24 1:00:	2018-04-25 7:56:	069e9887-4c87-	ATS.Device.1295	25	Speed Display
4	331357358	0.0,0.0,0.0	ATS.Site32270	Thing	2018-04-24 2:00:	2018-04-25 7:56:	069e9887-4c87-	ATS.Device.1295	25	Speed Display
5	331357359	0.0,0.0,0.0	ATS.Site32270	Thing	2018-04-24 3:00:	2018-04-25 7:56:	069e9887-4c87-	ATS.Device.1295	25	Speed Display
6	331357360	0.0,0.0,0.0	ATS.Site32270	Thing	2018-04-24 4:00:	2018-04-25 7:56:	069e9887-4c87-	ATS.Device.1295	25	Speed Display
7	331357361	0.0,0.0,0.0	ATS.Site32270	Thing	2018-04-24 4:45:	2018-04-25 7:56:	069e9887-4c87-	ATS.Device.1295	25	Speed Display
8	331357362	0.0,0.0,0.0	ATS.Site32270	Thing	2018-04-24 5:00:	2018-04-25 7:56:	069e9887-4c87-	ATS.Device.1295	25	Speed Display
9	331357363	0.0,0.0,0.0	ATS.Site32270	Thing	2018-04-24 6:00:	2018-04-25 7:56:	069e9887-4c87-	ATS.Device.1295	25	Speed Display
10	331357364	0.0,0.0,0.0	ATS.Site32270	Thing	2018-04-24 7:00:	2018-04-25 7:56:	069e9887-4c87-	ATS.Device.1295	25	Speed Display
11	331357365	0.0,0.0,0.0	ATS.Site32270	Thing	2018-04-24 8:00:	2018-04-25 7:56:	069e9887-4c87-	ATS.Device.1295	25	Speed Display
12	331357366	0.0,0.0,0.0	ATS.Site32270	Thing	2018-04-24 9:00:	2018-04-25 7:56:	069e9887-4c87-	ATS.Device.1295	25	Speed Display
13	331357367	0.0,0.0,0.0	ATS.Site32270	Thing	2018-04-24 10:0:	2018-04-25 7:56:	069e9887-4c87-	ATS.Device.1295	25	Speed Display
14	331357368	0.0,0.0,0.0	ATS.Site32270	Thing	2018-04-24 11:0:	2018-04-25 7:56:	069e9887-4c87-	ATS.Device.1295	25	Speed Display
15	331357369	0.0,0.0,0.0	ATS.Site32270	Thing	2018-04-24 12:0:	2018-04-25 7:56:	069e9887-4c87-	ATS.Device.1295	25	Speed Display
16	331357372	0.0,0.0,0.0	ATS.Site32270	Thing	2018-04-24 13:0:	2018-04-25 7:56:	069e9887-4c87-	ATS.Device.1295	25	Speed Display
17	331357373	0.0,0.0,0.0	ATS.Site32270	Thing	2018-04-24 14:0:	2018-04-25 7:56:	069e9887-4c87-	ATS.Device.1295	25	Speed Display
18	331357374	0.0,0.0,0.0	ATS.Site32270	Thing	2018-04-24 15:0:	2018-04-25 7:56:	069e9887-4c87-	ATS.Device.1295	25	Speed Display
19	331357375	0.0,0.0,0.0	ATS.Site32270	Thing	2018-04-24 16:0:	2018-04-25 7:56:	069e9887-4c87-	ATS.Device.1295	25	Speed Display
20	331357376	0.0,0.0,0.0	ATS.Site32270	Thing	2018-04-24 17:0:	2018-04-25 7:56:	069e9887-4c87-	ATS.Device.1295	25	Speed Display
21	331357377	0.0,0.0,0.0	ATS.Site32270	Thing	2018-04-24 17:2:	2018-04-25 7:56:	069e9887-4c87-	ATS.Device.1295	25	Speed Display
22	331357378	0.0,0.0,0.0	ATS.Site32270	Thing	2018-04-24 17:2:	2018-04-25 7:56:	069e9887-4c87-	ATS.Device.1295	25	Speed Display
23	331357379	0.0,0.0,0.0	ATS.Site32270	Thing	2018-04-24 18:0:	2018-04-25 7:56:	069e9887-4c87-	ATS.Device.1295	25	Speed Display

	I	J	K	L	M	N	O	P	Q	R	S	T	U	V	W	X
1	SpeedLimit	SignMode	DemoMode	RadarSensit	TimeResolut	MinSpeed	MeanSpeed	MaxSpeed	Pont500Spee	Pont850Spee	PontSlowed	PaceSpeed	DisplayWasI	TotalVehicle	TrafficBins	GmtOffset
2	25	Speed Displ	FALSE	0	60	12	21	29	20	27	45	22	TRUE	29	{rows:[{"Av	-4
3	25	Speed Displ	FALSE	0	60	11	25	33	25	30	44	27	TRUE	27	{rows:[{"Av	-4
4	25	Speed Displ	FALSE	0	60	24	26	30	25	26	25	27	TRUE	4	{rows:[{"Av	-4
5	25	Speed Displ	FALSE	0	60	0	0	0	0	0	0	0	TRUE	0	{rows:[{"Av	-4
6	25	Speed Displ	FALSE	0	60	27	28	29	27	29	50	28	TRUE	2	{rows:[{"Av	-4
7	25	Speed Displ	FALSE	0	60	0	0	0	0	0	0	0	TRUE	0	{rows:[{"Av	-4
8	25	Speed Displ	FALSE	0	60	0	0	0	0	0	0	0	TRUE	0	{rows:[{"Av	-4
9	25	Speed Displ	FALSE	0	60	0	0	0	0	0	0	0	TRUE	0	{rows:[{"Av	-4
10	25	Speed Displ	FALSE	0	60	10	15	36	14	19	37	15	TRUE	254	{rows:[{"Av	-4
11	25	Speed Displ	FALSE	0	60	10	15	42	14	20	32	15	TRUE	317	{rows:[{"Av	-4
12	25	Speed Displ	FALSE	0	60	10	17	30	14	24	29	15	TRUE	95	{rows:[{"Av	-4
13	25	Speed Displ	FALSE	0	60	14	25	32	27	31	44	28	TRUE	16	{rows:[{"Av	-4
14	25	Speed Displ	FALSE	0	60	13	22	32	23	28	31	22	TRUE	36	{rows:[{"Av	-4
15	25	Speed Displ	FALSE	0	60	12	23	36	23	28	23	22	TRUE	62	{rows:[{"Av	-4
16	25	Speed Displ	FALSE	0	60	10	23	38	24	29	31	25	TRUE	72	{rows:[{"Av	-4
17	25	Speed Displ	FALSE	0	60	10	23	36	23	30	27	25	TRUE	49	{rows:[{"Av	-4
18	25	Speed Displ	FALSE	0	60	10	23	34	24	28	39	24	TRUE	79	{rows:[{"Av	-4
19	25	Speed Displ	FALSE	0	60	10	23	34	23	30	27	26	TRUE	82	{rows:[{"Av	-4
20	25	Speed Displ	FALSE	0	60	0	0	0	0	0	0	0	TRUE	0	{rows:[{"Av	-4
21	25	Speed Displ	FALSE	10	60	0	0	0	0	0	0	0	TRUE	0	{rows:[{"Av	-4
22	25	Speed Displ	FALSE	10	60	11	24	32	26	29	47	25	TRUE	38	{rows:[{"Av	-4
23	25	Speed Displ	FALSE	10	60	11	24	37	24	31	34	23	TRUE	62	{rows:[{"Av	-4

- Included as part of Premium Reports Suite
- Clicking “Generate Report” downloads a .CSV file



Volume By Speed Analysis

ALL TRAFFIC
SOLUTIONS



Generated by Andrew Stout from All Traffic Solutions Software Developer Account on Jul 17, 2019 at 10:8:9 AM

Time of Day: 0:00 to 23:59
Dates: 3/1/2019 to 3/7/2019

Volume By Speed Report

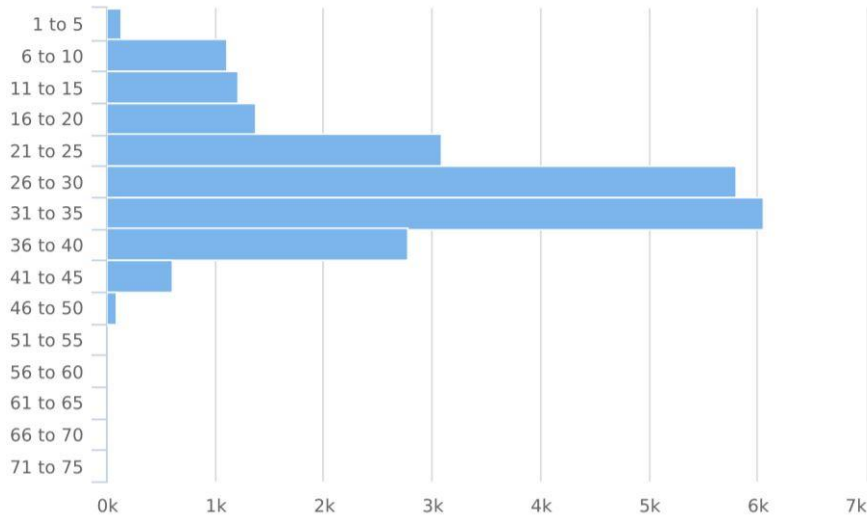
Time View: By Date (Total Volumes)
Speed Bins: Size 5, Range 1 to 100
Site: 1085 S Krocks Rd SB, SB

Date	Spd Lim	1 to 5	6 to 10	11 to 15	16 to 20	21 to 25	26 to 30	31 to 35	36 to 40	41 to 45	46 to 50	51 to 55	56 to 60	61 to 65	66 to 70	71 to 75	76 to 80	81 to 85	86 to 90	91 to 95	96 to 100	Avg Spd	Total #	
3/1/2019	25	8	168	149	201	401	924	1047	516	97	11	0	0	0	0	0	0	0	0	0	0	0	27.1	3522
3/2/2019	25	54	234	169	204	377	706	933	406	79	13	1	0	0	0	0	0	0	0	0	0	0	23.4	3176
3/3/2019	25	17	159	168	182	299	581	683	360	76	16	0	0	1	0	0	0	0	0	0	0	0	25.0	2542
3/4/2019	25	14	139	149	168	380	671	681	319	68	8	0	0	0	0	0	0	0	0	0	0	0	24.5	2597
3/5/2019	25	14	130	209	201	519	936	920	372	87	13	1	0	0	0	0	0	0	0	0	0	0	25.9	3402
3/6/2019	25	15	136	185	197	575	954	863	385	103	15	1	1	0	0	0	0	0	0	0	0	0	26.7	3430
3/7/2019	25	14	137	189	223	530	1038	922	421	92	16	2	0	0	0	0	0	0	0	0	0	0	27.0	3584
Total #		136	1103	1218	1376	3081	5810	6049	2779	602	92	5	1	1	0	0	0	0	0	0	0	0	25.7	22253

- Included with Standard and Premium reports
- Displays how many vehicles counted in each 5 or 10 mph/kph increment
- Can be viewed as totals or averages (totals recommended)
- Displays drop-off in speed counts

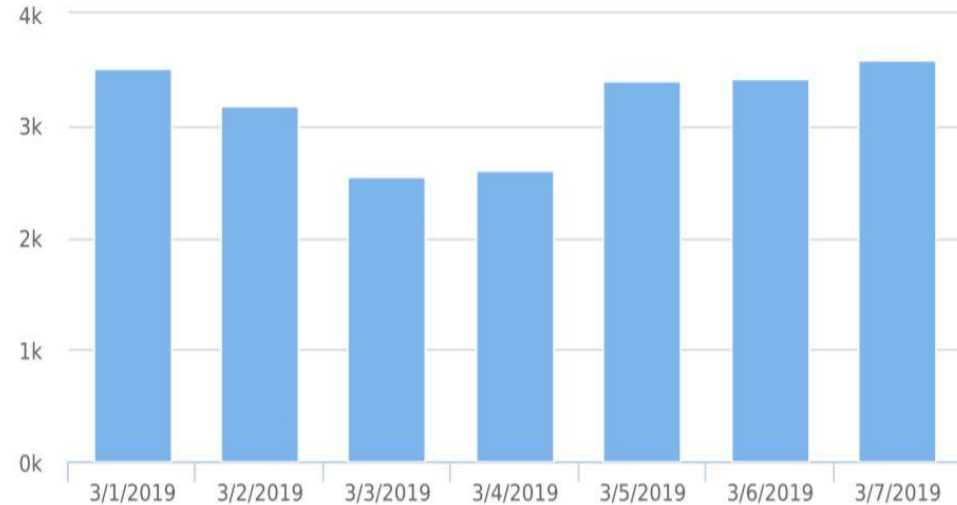
Volume By Speed Analysis

Total Vehicles by Speed Bin



- Histogram of Totals by Speed Increment

Total Volume by Date



- Number of vehicles counted by date

Volume By Time Analysis

ALL TRAFFIC
SOLUTIONS



Generated by Andrew Stout from All Traffic Solutions Software Developer Account on Jul 17, 2019 at 10:27:10 AM

Volume By Time Report

Time of Day: 0:00 to 23:59
Dates: 3/1/2019 to 3/7/2019

Time View: By Date (Total Volumes)
Speed Bins: Size 5, Range 1 to 100
Site: 1085 S Krocks Rd SB, SB

Date	00:00	01:00	02:00	03:00	04:00	05:00	06:00	07:00	08:00	09:00	10:00	11:00	12:00	13:00	14:00	15:00	16:00	17:00	18:00	19:00	20:00	21:00	22:00	23:00	Total
3/1/2019	41	18	13	14	15	46	38	78	127	152	142	193	227	198	232	286	308	345	276	230	189	152	122	80	3522
3/2/2019	36	50	37	16	19	17	37	52	76	107	183	170	249	231	222	241	264	241	242	192	156	127	118	93	3176
3/3/2019	31	36	18	10	8	15	23	39	89	121	192	222	250	263	287	243	183	175	109	89	55	33	28	23	2542
3/4/2019	9	8	13	19	19	22	35	73	64	63	121	152	140	163	194	229	268	226	214	176	146	130	64	49	2597
3/5/2019	20	13	8	6	16	42	88	121	134	145	161	188	206	226	242	269	288	310	273	213	163	129	76	65	3402
3/6/2019	35	11	6	14	14	49	89	113	130	129	179	191	210	184	222	263	298	306	282	230	196	129	92	58	3430
3/7/2019	26	18	4	12	16	35	82	161	153	136	156	201	227	231	247	300	295	312	258	228	198	141	89	58	3584
Total #	198	154	99	91	107	226	392	637	773	853	1134	1317	1509	1496	1646	1831	1904	1915	1654	1358	1103	841	589	426	22253

- Included with Standard and Premium reports
- Traffic counts for each hour
- Sorted by Date, Day or Week, or By Week
- Can be viewed as totals or averages (totals recommended)



Volume By Time Analysis

ALL TRAFFIC
SOLUTIONS



Volume By Time Report

Generated by Andrew Stout from All Traffic Solutions Software Developer Account on Jul 17, 2019 at 10:27:10 AM

Time of Day: 0:00 to 23:59
Dates: 3/1/2019 to 3/7/2019

Time View: By Date (Total Volumes)
Speed Bins: Size 5, Range 1 to 100
Site: 1085 S Krocks Rd SB, SB

- Dates determined by selected Date Range
- Number of vehicles counted by date

Volume by Date

